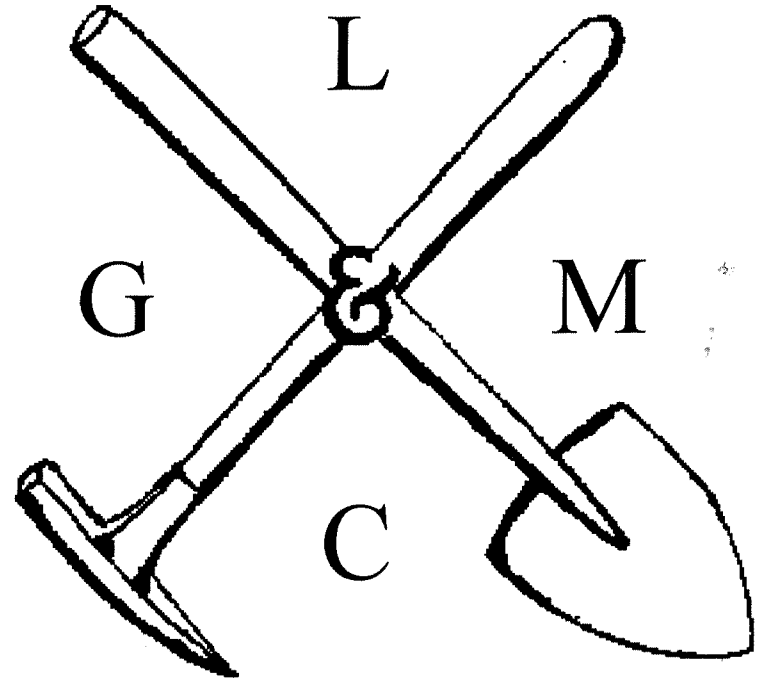
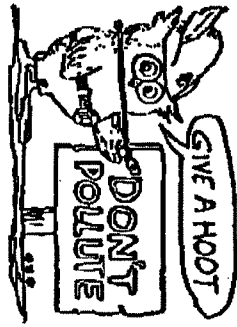


THE PICK & SHOVEL

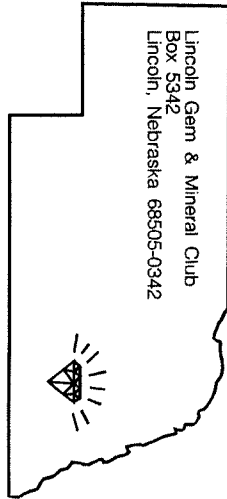
April, 2004



OFFICIAL PUBLICATION OF
LINCOLN GEM & MINERAL CLUB
LINCOLN, NEBRASKA



H. E. L. P.
Help Eliminate Litter Please



Mail Exchange Bulletins To:

Lincoln Gem & Mineral Club
Box 5342
Lincoln, Nebraska 68505-0342



Associated with



Edward Ridge
2507 A St.
Lincoln, NE 68502
|||||



CLUB EVENTS

Apr. 22 General Mtg., Antelope Park, 7PM

May 6 Board Mtg., 7PM

27 General Mtg., Antelope Park, 7PM

28 Field trip to Lincoln, MO., see p. 7

July 4 weekend...President's CO. field trip,
(see page 7).

18 Grinding Party, Pioneers Park 1-4PM

April Meeting

Program: Silver Casting. By Phil and Patty Rose. This will be another great program, folks! Don't miss it.

Snacks: Spring Pies from Vera Lyman, Phyllis Parks and Judy Reilly

Door Prizes: Roger Pabian, Judy Reilly



Roger Pabian, Show Chairman, and Pat Cunningham,
Selling Demonstrator at the 46th Annual LGMC Show.

(Photo by Bill White.)



Happy Easter



PRESIDENT'S MESSAGE

Thanks to Roger and all of the LGMC members who helped with the show. Reports that I've heard have been good. Please reflect back on the total events of the show and if anything comes to mind that would help provide a positive experience for our guests and members in shows to come, jot it down. Please pass your suggestions on to John Harrison, who is next year's show chairman, for implementation.

I would like to invite everyone to participate this year in the field trips offered by our club and others. We will be going to Lincoln, Missouri for mozarkite on Memorial Day weekend (Sunday). I understand the Omaha club will also have field trips that same weekend. Don't forget my Presidential Field Trip to the Wigwam Creek mineral claim with the Denver Gem and Mineral Guild on the July 4th weekend. Please see the write-up on these trips elsewhere in the Pick & Shovel. I would like to have an idea of how many people plan to join us for our two trips, so please phone, write or e-mail me with your plans, whether they be tentative or firm. I can then relay the information to our hosts. Everyone is encouraged to attend either or both trips.....Rock On.

James Marburger

Regional Federation Shows

South Central

September 24-26, 2004- Houston, TX.

Rocky Mountain

April 23-25, 2004- Wichita, KS.

Midwest

April 23-25, 2004- Cedar Rapids, IA.

Combined California

May 28-30, 2004- Mariposa, CA.

Eastern Federation/ AFMS

July 7-11, 2004- Syracuse, NY.

Northwest

July 23-25, 2004- Boise, ID.

For Juniors

Scientists Need Your Help!

From <http://marsrovers.jpl.nasa.gov/classroom/schoolhouse/>
Mars scientists are asking students from around the world to help them understand the red planet. Send in a rock collected by you or your classroom from your region of the world, and we will use a special tool like the one on the rover to tell you what it's made of. Then everyone can compare their rocks to the ones found on Mars.

We'll post a picture of your rock on the web, and give you a report on what kind of rock it is. We'll also send you an official certificate and Mars sticker for your contribution.

Your rock will be kept in a special collection where scientists from around the world can come to study them.

Here's how you can participate:

Minimum to send:

- ◆ Rock - minimum 2" / maximum 6" (preferred 4" size)
- ◆ Name
- ◆ Age
- ◆ Address (to send certificate and sticker - not released)
- ◆ Name of city/village and country (include zipcode if US)
- ◆ Clean rock - wash with water if dirty (make free of dirt)

Note: Only first names, age and cities will be listed on the web.

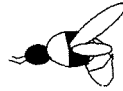
Optional:

- ◆ Latitude/longitude of sample site
- ◆ Name of Geographic feature (if it has one) where rock was collected
- ◆ Copy of map with location where rock was collected
- ◆ Picture of rock in person's hand for scale
- ◆ Picture of location where rock was collected (with no people)
- ◆ Short paragraph describing area where rock was collected

Place to Send Your Rock

Dr. Phil Christensen
Mars Space Flight Facility
Arizona State University
Moeur Bldg Rm 131
PO Box 876305
Tempe AZ 85287-6305

From RFMS Newsletter 3/04, via Quarry Quips 3/04



WHAT'S THE BUZZ?

by Judy Reilly

THE SHOW WAS GREAT! Thanks Roger!

I'm looking forward to the MWF Show and Convention later this month. Our delegate, Susy McMahan and I will bring back loads of info and hopefully a few good field trip finds.

Please consider writing a report or an article for the Pick & Shovel. A report could be a few paragraphs telling about what you have been doing (hobby-related field trips, etc.) A field trip report can be considered an article if it includes some educational content. I'd love to submit some articles from our club to the MWF contest at the end of the year. I know we have a lot of talented writers out there! Submit reports or articles to me by e-mail @queenbeejr2@aol.com or by snail-mail to 4050 Worthington Avenue, Lincoln, 68502.

NAOESCI Meeting, March 28, 2004

The State Association meeting was held at the LGMC Show, Sunday at 1 PM. A complete report will appear in the next issue of the Gem Palette, but the highlights are as follows:

All five clubs were represented. The meeting was conducted by President, Pat Akins, Jr.

Susy McMahan, Sec/Treas will compile a NAOESCI Membership Directory this year. Also, membership cards will be printed and distributed to individual clubs for those who want them. NAOES pins will be available for individual clubs to order.

The Gem Palette will continue to be issued five times per year at \$5.00/ family/ year. Judy Reilly will continue to be the editor.

The next State SWAP will be this Labor Day Weekend at the Crawford SWAP. The next General Meeting will be Sept 2005 at the Schuyler Show.

Since it will be over a year before the NAOES Board meets, it was decided that the current slate of officers will be retained.

LINCOLN GEM & MINERAL CLUB, INC. – BOARD OF DIRECTORS – March 4, 2004 Walt Library

President Jim Marburger called the meeting to order at 7:01 p.m. Board members present were Jim Marburger, Sharon Marburger, Vera Lyman, David Heffelbower, Jim Atkins, John Harrison, Roger Pabian, and Judy Reilly. Guests were Ed Ridge and Phyllis Parks.

The minutes of the previous meeting were read. Jim Atkins moved to accept the minutes as read, 2nd by John Harrison. Motion carried. John Harrison moved to accept the Treasurer's report, 2nd by Jim Atkins. Motion carried.

Phyllis Parks reported that the books are ready for audit, then turned them over to the auditors. Once the books have been reviewed individually, a meeting will be scheduled to review them as a group. Attendees will be John Harrison, Roger Pabian, Jim Marburger, Vera Lyman, and Sharon Marburger.

A letter was received from a student at Concordia College, and a recommendation letter from a professor. Because the student is a geography student, discussion ensued regarding possibly giving student a club education scholarship rather than the graduate scholarship. The matter was tabled to the April general meeting.

Roger Pabian would like to discontinue being the library custodian by the end of 2004. The library currently contains enough publications to fill three good-sized bookcases and two 4-drawer file cabinets. Suggestions were entertained as to what can be done with the library. The city library or university library were suggested as being places that might be willing to keep the set intact.

President Marburger expressed concern regarding the Club's historical information. Document and picture scanning was discussed, as was where the paper documents will be stored. Phyllis mentioned that the scrapbooks, photo album, and memorial book are currently missing. The subject was tabled to the next board meeting.

The next Board meeting will be April 6. Vera will call Kinkos to see if the meeting room is available. The location of the May 6 meeting will be announced later.

Motion by Sharon Marburger to adjourn; 2nd by Vera Lyman. Meeting adjourned to the show committee meeting.

Respectfully submitted,
Sharon Marburger



LGMC Treasurer's Report for March 2004

Pinnacle Checking Balance on 2/29/04 \$3520.00

March Receipts:

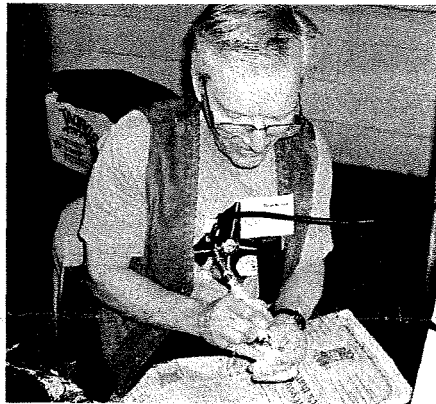
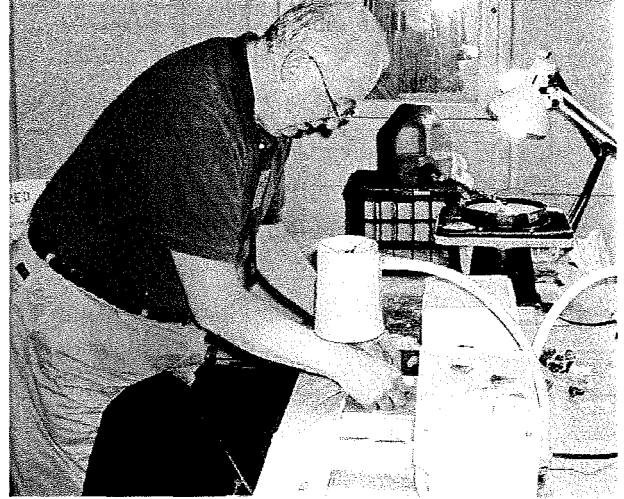
| | | |
|---|--------------|----------------|
| Member Dues-Gordon Miller | 10.00 | |
| * Charlene Zweerink-5 Z's (Selling Demo) | 40.00 | |
| * Thomas Gitchel (Selling Demo) | 40.00 | |
| Bob Fixter (Prog Ck Ret-SLCEF) | 50.00 | |
| ** Youth Receipts at Show | 547.85 | |
| ** Pin Sales | 62.75 | |
| Show Change (Suspense) | 1000.00 | |
| * Silent Auction | 477.50 | |
| * Gate Receipts (Saturday) | 2630.00 | |
| * Gate Receipts (Sunday) | 2183.00 | |
| * Plants Sales | <u>78.00</u> | 7119.10 |

March Payments:

| | | |
|--|--------------|----------------|
| The Hartford (Liability) (* \$100 Show) | 350.00 | |
| * Roger Pabian (Flyers, Disc coupons) | 23.77 | |
| * Marilyn Stewart (Certificates) (Suspense) | 23.63 | |
| * Rixtine's (Ribbons) | 103.90 | |
| Rixtine's (50th Anniv Pins-100) | 251.46 | |
| * Office Depot (Address Labels) | 32.09 | |
| * Aulden Stewart (Name Badges) | 34.22 | |
| * Roger Pabian (Handout Programs) | 72.00 | |
| * Pat Akins, Jr. (Floor) | 49.22 | |
| * Pinnacle (Cash for Show) (Susp) | 1000.00 | |
| * Bob Fixter (Show Program) | 50.00 | |
| * Robert Diffendal (Show Program) | 50.00 | |
| * Eric Fritzsich (2 Show Programs) | 75.00 | |
| * Angelo Casarez (Security- Days) | 380.00 | |
| * Scott Gaston (Security- Nights) | 420.00 | |
| * Old Country Buffet (Dealer Breakfasts) | 180.55 | |
| Phyllis Parks- Copies | 6.00 | |
| * Linda Plock (Spec Feat- Gold Dsply) | 50.00 | |
| * Sunwest Bouquets & Plants (30) | <u>90.80</u> | 3242.64 |

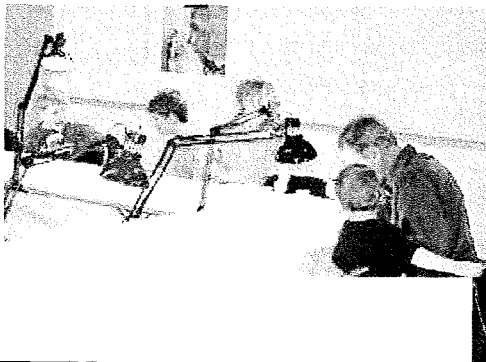
Pinnacle Checking Balance 3/31/04 \$7396.46

Scenes From the 2004 Show



Photos above and left
by Bill White

Photos below
by Roger Pabian



SHOW REPORT by Roger Pabian

Many thanks are due to those who participated in which turned out to be a show with a lot of activity from start to finish. I am especially indebted to the committee members who provided journeyman service to the event, and whose efforts made the show a "pretty classy" event.

To Vera Lyman, Jim Atkins, Adeline Nolde, Bill Rockel, Phyllis Parks, and all who staffed the front desk, Thank you! Your helpful demeanor at the desk gives the first impression of the show to new visitors, and we had few, if any, dissatisfied visitors.

Thanks to Vera for arranging for security, keeping the finances, heading up the ticket sales, and all of the other behind the scenes things she did to make the show go on.

Bill and Betty White arranged for the dealers and all 14 appeared to be happy with their sales at the show. Betty, Susy McMahan, and Shirley Rockel all worked with the silent auction during the show and this event netted a nice bit of income for the club.

Many thanks are due to Pat Atkins, Roger and Mary Pittard for their work first packing, then transporting, unloading, and repacking the trailer. The trailer and the black light display provided a new element to the show.



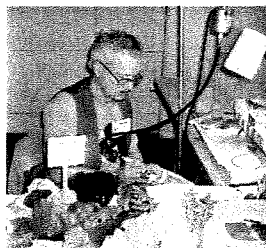
Marilyn and Aulden Stewart did a very fine job with the ribbons and the certificates. The colorful and bordered certificates provide a very nice memento to the show.

The programs were especially well received and Eric Fritsch, Bob Diffendal, and Bob Fixter each gave outstanding presentations that were all well attended. Thank you for arranging these, John (Harrison).

The Parks family, Phyllis, Linda, Andy, and Michael, all worked at the club booth, one of the most important parts of the show. There is where we find new members.

Thank you.

The special features were lined up by Sharon and Jim Marburger, and they were special. Steve Huber's display and demonstration, as well as his



ability to answer questions, made him a star attraction. Many people left the show with a greater understanding of lapidary techniques than they ever dreamed of learning. The Daredevil from John Baumler, the history of gold display by Linda Plock and Lynne Barnett, the many mastodon fossils from Don and Maudie Gless, Thayer and Jefferson county fossils by Donovan Harriss and the lapidary and mineral displays from Bill and Betty White were all well received. Thank you.

Mark and Kammie Renter arranged for the working exhibits which included the "J-Team" of Judith Bay and Jayne Beer, Southeast Community College Lapidary Class (Lynne Bowes,



Jackie Pfeifle, and Joyce Eicher); bead artistry by Nebraska Bead Society; rock carving by Connie McCartney; Niobrara fossils by Ben Vrana, flint knapping by David Nixon and crew; and glass bead making by Hadrian Duke. Thank you for lining up such a strong slate of working exhibits.



The selling demonstrators were all very busy during the show. Amber Sorensen's gem trees were a welcome addition to the show, as were Charlene Zweerink's seed beads, Tom Gitchel's fossil preparation, Pat

Cunningham's hand made jewelry, Pat Atkins' wood, and David Heffelbower's opal cutting.

The junior booth and gem dig, led up by Kay Jurgens and the juniors have always been a popular attraction to the show, and this year was no exception. Good job there.

Eddie Ridge did an excellent job of arranging for all of the displays and the floristry on the main floor. The display area was pretty well filled up, but we could have used quite a few more individual exhibits. Too few people filled up too much of the exhibit space. It is very difficult for the exhibits chair to fill the hall when there is not full-membership cooperation. Thank you for a job very well done, Eddie.

(Continued on page 4)

(Continued from p. 3)

Publicity was very well done by Phil and Patty Rose. The radio and newspaper ads were very nice, and their extra effort in contacting the TV stations paid off with a pre-show and during the show interviews with channels 10/11 and a during the show interview with channel 8. These bring attention not only to the show, but also to the club as a whole. Very well done!

I have attended every one of Lincoln Gem & Mineral Club's shows, and have participated in each since the second one at the armory. There were but six dealers, and a couple of demos.

This year marked the 10th or 11th time I have chaired a show. The first time was in 1973, some 31 years ago. I think we still had a fall date then, and we found it difficult to compete with home football games. There was a home football game on the Saturday of that 1973 show and we had only about 80 paid attendance. Needless to say, I was pretty depressed, but the crowds came on Sunday, and we actually turned a profit of about 130 dollars.

One of the things I have witnessed has been the growth of the hobby through the early and middle 1970's, and a decline in the hobby beginning in the late 1970's. The decline, however, is probably more perceived than real. The 1970's were a period when everybody was into everything. When it became impossible to keep up, people got into what they liked best. Although the numbers in the hobby dropped, the quality of the rockhound improved. There has also been a change in what the hobbyist likes. In the 1970's, specimen collecting was big. There are a few specimen collectors around, but now jewelry, beads, and metalsmithing are becoming the big area in the hobby. Most dealers devote only a few square feet of their displays to the rockhound of old.

There are many changes in the hobby that I have observed over the years. Like it or not, the changes are usually imposed on us from outside sources---economic, social, political, and regulatory issues, as well as customer tastes all effect the hobby. As show sponsors, we always have to keep abreast of these issues.

Thank you again for all of your support. Let's give the same support to John Harrison in 2005. RKP

Find of a Lifetime

By Susy McMahan

The March Show was quickly approaching, the ground was finally drying out, and we needed shale with fossils for the junior booth. Roger Pabian, show chairman, was going out to collect the materials we needed, and I invited 'me & my truck' to help him. Needless to say, the two-hour trip turned into a great, six-hour agate hunt. Every other mile or so Roger would exclaim "turn down that road, I haven't hunted there for quite awhile".

On one wonderful muddy, skinny road (don't ask me how to get there, cause I was completely lost) I stopped the truck as directed. Roger took one side, I took the other, and we hunted for agates in the ditches. My ditch was deep and muddy, and full of rocks. I noticed (with a little snicker) that his side was shallow and not very rocky. Later, Roger would say he let me take that side of the road, and that was the "end of chivalry" for him.

Suddenly I heard my name, "Susy... Susy", coming from the ditch. Looking carefully, I spotted a 'pattern'!! Lines!! Colors!! On a huge chunk of rock, right there in the ditch, dwarfing all the rocks surrounding it, was the biggest Lake Superior agate I had ever seen. I concealed my excitement, and nonchalantly walked toward Roger with the agate partly hidden behind my back. He commented that it looked like I had found an agate. I held out the rock, turned it over so the pattern was visible. The look on Roger's face when he saw it was priceless!

I had found my Rock of a Lifetime. Of course I am not anywhere close to done hunting for another jewel. And I am sure that Roger will be hunting (on the deep, muddy rocky side) twice as hard now! Although he may have to hunt clear up to Minnesota to find the other half!



FEDERATION NEWS

MWF Newsletter, April, 2004

Mineral Collecting Sites in Iowa
By George Judd G.G., Mineralogy Chairman

Since the Midwest Federation is having its show & Convention at Cedar Rapids, Iowa in April, I thought I would research some collecting sites in Iowa. Even though Iowa has only sedimentary rocks on the surface, it is known for its many collecting sites. Limestone quarries, gravel pits and mines throughout the state are among the most productive collecting sites in this state.

My first encounter with mineral collecting in Iowa was when members of our club went to the Midwest Federation show at Sioux Falls, South Dakota. On our way there we stopped at Pints Quarry and collected beautiful calcite crystals that were in the center of a group of pyrite crystals. They still hold a top spot in my self-collected minerals. Also we were able to collect pyrites with a beautiful iridescence of colors.

Pints quarry is found on the north side of U.S. 20 in Raymond Iowa. However I've been told the quarry is presently closed because of flooding. There is a quarry on the south side of U.S. 20 near Raymond, Iowa called Peske quarry and it has several different minerals to collect like calcite, fluorite, pyrite and marcasite, just to name a few. Four days after our trip to Raymond, Iowa we went on a field trip to Haberdern, Iowa where we dug out Selenite crystals with nice crystal faces.

The Geode is Iowa's State Rock and can be found in a 40 to 50 mile circle around Keokuk, Iowa. Although they look rather plain and drab on the outside, the inside is lined with crystals. The best place to look is in the outcrops along stream beds in the southeastern counties of Iowa. One place I've heard about is along the Muddy Creek in Henry County near Lowell, Iowa.

The following sites are just general information and should be further looked into before going to them as they could be closed down or not allow collecting anymore. White calcite crystals called "Dog-tooth spar" are found in limestone cavities from Mahaska County. Also masses of pyrite crystals of a brassy color are found at this location.

Galena with a metallic-gray luster and cube shape are found in Dubuque County where these ores were mined for over 300 years from veins in the dolomite bedrock. Gypsum variety selenite is from Appanoose County. Gypsum is mined in Webster and Des Moines counties for wallpaper production.

Limonite is a yellowish-brown ore of iron. It takes many forms, including a cellular structure. Iron Hill area near Waukon in Allamakee County is the first place to look for this mineral.

In Iowa's northern county of Fayette, good quality and large sizes of Lake Superior Agates are found in many creek beds. Also, in Fayette County, rounded masses of radiating crystals of Barite are found.

Metallic clusters of pyrite crystals form bumps on limestone and come from Black Hawk County. Fragments of petrified wood can be picked up from gravel along Iowa's rivers. The Cedar River in Linn County is just one example of many rivers.

Stalactite is found in a cave in Winneshiek County. Such cave decorations are composed of the mineral, calcite, and are deposited in distinctive shapes by the slow dripping of lime-rich groundwater.

Heavy nuggets of Copper are found on rare occasions in Iowa's glacial deposits. They probably originated in the Lake Superior area of Michigan's Upper Peninsula.

In Rock & Minerals Magazine, Nov./Dec., 2002, Vol.77, No. 6, you can find the Iowa Mineral Locality Index. The index lists localities by county. Check it out! (Article edited for space.)

AFMS Newsletter, April, 2004

Some Thoughts on Stress and Safety

From Bill Buckner, AFMS Safety Chair

During the last 6 weeks I have been recovering from a flare-up with my heart and had a surgical implant of a pacemaker. I am doing all right. I had to follow some prescribed don'ts-don't reach up, don't bend over, don't drive, don't sleep on the left side, don't get involved in recreational activities, plus a few more. This brought on a new sense of stress for me. It is much harder for me to do nothing than to be active, so here are a few of my active thoughts which I had while I was observing those "don'ts."

The tires on our cars have to have enough air pressure to hold up the car or it will be flat and will not do its job. Too much tire pressure will cause the car to ride rough, or even cause a blowout. As a boy, I was given a spring-wound watch. If it wasn't wound tight enough it would not run. Unfortunately, I wound it too tight and the spring broke. Both too much and too little stress is dangerous.

Our bodies & minds both work better when we get enough exercise and rest and eat right. In all that we do, we are safer if we keep these things in balance.

Enjoy life, do good work and be helpful to someone.

CLEAVAGE IN CRYSTALS

By Ruby Lighthelm, from *The Rockhound*

Graphic 7/92

(This article was the Trophy article in 1993,
RMF, 4th, AFMS)

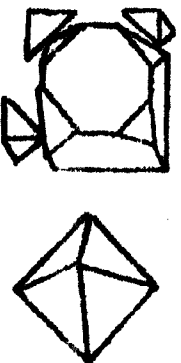
Crystal cleavage is a deeper subject than most people think. It is also one of the first things to look for when identifying a mineral.

Cleavage in a mineral is when it breaks along definite planes when it is hit sharply with an object, such as a hammer. The cleavage planes occur where the atomic structure in the crystal is the weakest and the direction of the cleavage plane is always parallel to a possible crystal face. The ease with which a mineral cleaves is said to be "eminent" or "perfect" if the cleavage plane is very smooth and it cleaves readily. "Good Cleavage" has surfaces that are not quite so smooth, "poor" and "imperfect" are even less smooth and the crystal does not cleave so readily.

Some minerals have one cleavage plane, others have two or more. *Mica* has one perfect cleavage plane which has given it the chance to become the windows in early day cars, baggies, or in fancy wood stores because it can be cleaved into large, thin sheets. A piece of *mica* showing the the cleavage planes is called a "book" of *mica*. *Mica* cleaves so well that any other mineral forming thin, flat, and easily separate sheets is said to have a *micaceous habit*.

Selenite crystals are the crystal form of *gypsum*. It has three cleavage planes, but only one is perfect. This is why a lot of your *selenite* crystals splinter off lengthwise if you are not careful.

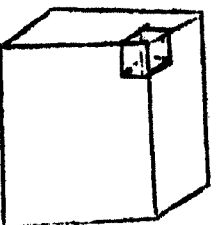
Calcite has perfect cleavage in three directions, making a rhombohedron form. This particular cleavage brought about the first speculation regarding the internal structure of crystals. In *Minerals and Man* by Cornelius S. Hartsh, Jr.



A cube of fluorite can become an octahedron when cleaved.



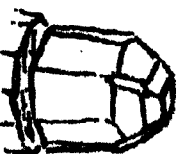
A mica book, partly "unstacked"



Galena has a perfect, 3-directional cleavage at 90degrees, making many more cubes of galena.



Calcite has a perfect, 3-directional cleavage, but not at 90 degrees.



Basal cleavage in topaz.

we read, "In 1782 Rene Just Haüy, a Professor at the University of Paris, was horrified when a friend accidentally shattered a prized calcite crystal by dropping it on the floor. However, the accident had its rewarding side, for Haüy noted that both large and small fragments had the same shape, and suggested that the cleavage rhombohedron is the primitive form out of which all calcite crystals are built.

Galena and halite (salt) both have three-directional, perfect cleavages. Fluorite has a perfect octahedral planes. Topaz has a perfect basal cleavage which helps distinguish it from quartz.

Quartz has an indistinct cleavage, but sometimes the cleavage planes can be observed in a clear crystal as the little "rainbows" or layers of tiny, lustrous surfaces.

Cleavage is the culprit in many factors difficulties. Diamond is very hard, but a stone can be made worthless by a mis-judgment of where the perfect, octahedral planes are located. Stones like topaz with its basal-plane-cleavage can cause problems. In order to overcome this it is necessary to facet the stone so that the table is tilted a few degrees off the cleavage direction. It is also often difficult to obtain a good polish if the table facet is oriented parallel to a cleavage direction.

SOURCES USED:

Encyclopaedia of Minerals and

Gemsstones, edited by Michael

O'Donoghue

Dana's Manual of Mineralogy, by

Cornelius S. Hartsh, Jr.

Minerals of the World by Charles A.

Sarnell

Field Guide to Rocks and Minerals by

Frederick H. Pough.

The Audubon Society Field Guide to

North American Rocks and

Minerals.

The World of Rocks & Minerals by

Benjamin M Shanh.

Holiday Field Trips by Jim Marburger

Memorial Day: We will meet at Sutherland's Lumber Company parking lot in Sedalia, Missouri at 10:00 a.m. on Sunday, May 30, 2004. We will be meeting with Mr. Linville Harms, owner of the mozarkite mine. We will travel about 23 miles south on Highway 65 to the mine location near Lincoln, MO. There is no limit on the amount of material collected, but Mr. Harms will help hi-grade so that only good material is taken. The cost is 50 cents per pound for good stone. As the one who discovered mozarkite, Mr. Harms will present the history of the stone.

The distance from Lincoln, Nebraska to Sedalia, Missouri is approximately 288 miles, with a travel time of five hours. Sharon and I will be traveling on Saturday, camping at Sedalia, and returning home on Monday morning after a bountiful Sunday of collecting. We might also do some fishing at Harry Truman Reservoir if time and weather permit. There are motels and campgrounds at Sedalia.

Some digging is required, so bring your shovels, picks, buckets and strong backs! Also, remember to bring your sunscreen. The mine is worked from time to time and is accessible by car or truck. Most of the mozarkite is found in the tailings of the mine; the tailings are dug up by a backhoe.

We will provide maps and motel/camping information to anyone interested in going. Please contact me by May 10th if you plan to join us.

July 4th: The President's Field Trip this year is to the Denver Gem and Mineral Guild's claim on the Wigwam Creek trailhead in the Pike National Forest in Colorado. It is near the site of the Hayman Fire of 2003, but the claim area was spared from burning. Local elevation is between 8,000 and 9,000 feet above sea level.

Travel day to Bailey, Colorado is July 3rd. The distance from Lincoln to Bailey is 528 miles, with a travel time of 8 to 9 hours. Paul and Denise Blankenheim, members of the Guild, will meet us at an as yet unspecified time and location in Bailey and guide us to the Wigwam Creek Trailhead, which is about 18 miles from Bailey. Dry and self-contained camping is available at the claim, as there is no water, electricity, or facilities. The road to the claim is accessible to cars, pickups, campers, and small-to-mid-sized trailers.

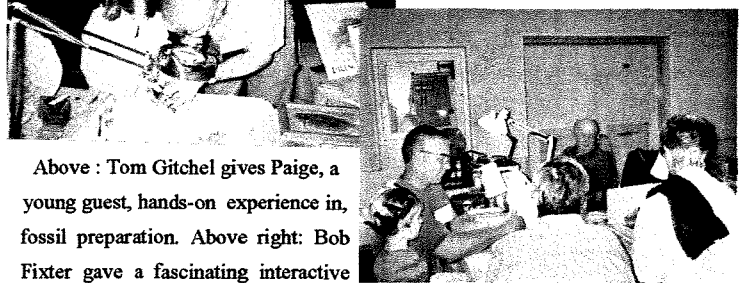
There are motels in southwest Denver, about 30 miles from Bailey. For those who choose to use a motel, someone will guide you to the claim from Bailey on Sunday morning. The exact time and meeting place in Bailey has not yet been determined.

Materials to be collected at the claim are amazonite, smoky quartz, feldspar and possibly topaz. The minerals are found in the Pike's Peak granite which is highly weathered and fairly easy to dig in. Collecting will be all day July 4th, limited collecting on July 5th, depending on when return travel to Lincoln begins.

Please plan to attend this major field trip. Several other clubs will be joining us at the claim. The Denver Guild members are a fun and hard-working group, so we expect a grand time to be had by all. Don't forget to bring your sunscreen, shovels, picks, rock hammers, and buckets!

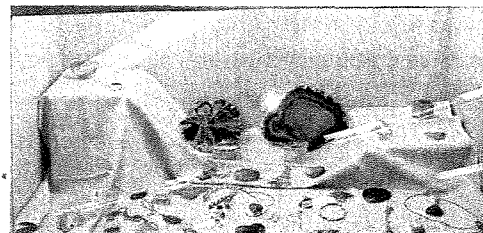
Maps and additional information will be provided in mid-June to those interested in going. Please contact me by June 15 if you plan to join us.

Educational opportunities occurred in abundance at the LGMC Show. Below are some images that demonstrate this very well:



Above : Tom Gitchel gives Paige, a young guest, hands-on experience in fossil preparation. Above right: Bob Fixter gave a fascinating interactive program about gold.

Above: Fred Hobart demonstrates lapidary to crowds of people- even a "princess".
Left: Special exhibits and club member displays were both beautiful & educational.



Places to Go, Things to Do

Some friends in the Omaha Club are getting together over Memorial Day weekend in Keokuk, Iowa. Anyone is welcome to join them. This is not a club field trip, rather a get together of friends.

Hunting for Geodes

Keokuk, Iowa
Memorial Weekend

Saturday, May 29, 2004 at 8:30 a.m.

Location: Meet at the Sheffler Rock Shop
6 Miles South of Alexandria, MO at Junction of Highway 61
IF INTERESTED: Some will meet prior for breakfast: 7:00a.m. at 4th Street Cafe
22 South 4th Keokuk, IA. Then will go to Sheffler Rock Shop to meet others.

Bring Lunch and lots of water

Fee: \$15.00 for adults for 50lbs of geodes \$0.75 per pound over run
Children under 12 Free

Suggested items needed:

- | | |
|-------------|------------|
| Rock Hammer | Gloves |
| Chisels | Large Pick |
| Shovels | Pry Bars |
| Buckets | Sunscreen |
| Knee Pads | Tic Spray |

Overnight camping
\$7.50 per night w/electricity

Pot Luck Dinner
Saturday evening

**Fun
Sell
Buy
Swap**

Covered Pavilion
Indoors if the weather is bad

The Sac & Fox Lapidary Club
Fairfield, Iowa
Invites you
to its annual
ROCK SWAP & SALE
May 15 & 16, 2004
Jefferson County Fairgrounds
U. S. Highway 34,
West edge of town
Fairfield, Iowa
HOURS
Saturday: 9:00 am - 6:00 pm
Sunday: 10:00 am - 5:00 pm
\$7.50 set up fee
Contact person
Dennis Kossow - (641) 472-5874
billrath@iowatelecom.net
www.iowatelecom.net/~billrath/show.html

Handcrafted & custom made jewelry, beautifully displayed gem-stones, rough rock, minerals, beads, geodes, fossils, carvings, opal AND MORE!

Displays, demonstrations, books and
OL' GLORY HOLE MINE!
to look for your own treasures

The Sac & Fox Lapidary Club
Fairfield, Iowa
Invites you
to its
Gem & Mineral Show
September 11 - 12, 2004
Jefferson County Fairgrounds
U. S. Highway 34,
West edge of town
Fairfield, Iowa
HOURS
Saturday: 9:00 am - 8:00 pm
Sunday: 10:00 am - 5:00 pm

Show Chairperson
Bill Rathbun - (641) 472-0288
billrath@iowatelecom.net
www.iowatelecom.net/~billrath/show.html

Admission Donation
13 and above \$1.00
6 through 12 - \$0.25
children 5 and below - Free

Cedar Valley Rocks & Minerals Society
Presents
its 2004
GEM, MINERAL & FOSSIL SHOW
Hosting the
MIDWEST FEDERATION SHOW & CONVENTION

Friday, April 23 - 10:00 a.m. to 6:00 p.m.
Saturday, April 24 - 8:30 a.m. to 6:00 p.m.
Sunday, April 25 - 9:30 a.m. to 5:00 p.m.

SPECIAL EXHIBITS

Hawkeye Downs
4400 6th Street SW
Cedar Rapids, Iowa

SPECIAL NEW LOCATION

DINOS AND MORE IN 2004

SHOP HINT: Anyone who works with flat silver in making jewelry discovers that sooner or later, every scratch in the metal has to be removed. Common transparent contact paper from the discount store (the sticky kind with the removable backing) in the answer. Place on each side of the silver sheet for protection. What is more, it accepts and holds onto permanent ink pen lines and will not pull loose when you are sawing through it.

From The Rockpile via The Gem Rock via The Rear Trunk 4/04

2004 ELECTED OFFICERS

| | | | | | |
|----------------------------|--------------------|------------------------------|-------------|-------|---------------|
| President | James Marburger | 332 Locust | Hickman, NE | 68372 | 792-2348 |
| 1 st Vice Pres. | Pat Akins, Jr. | 5017 No. 6 th St. | Lincoln, NE | 68521 | 477-1322 |
| 2 nd Vice Pres. | Roger K. Pabian | 5301 X Street | Lincoln, NE | 68504 | 465-0144 |
| Treasurer | Vera Lyman, | 420 N. 56th St. | Lincoln, NE | 68504 | 464-6089 |
| Secretary: | Sharon Marburger | 332 Locust | Hickman, NE | 68372 | 792-2348 |
| Board Member | David Heffelbower, | 1819 Washington St. | Lincoln, NE | 68502 | cell 890-2794 |
| Board Member | James Atkins | 3028 So. 35th St. | Lincoln, NE | 68506 | 483-1610 |
| Board Member | John Harrison | 330 Locust | Hickman, NE | 68372 | 792-2337 |
| Board Member | Judy Reilly | 4050 Worthington Ave | Lincoln, NE | 68502 | 421-3064 |

Nominating Committee

| | |
|---------|-----------------|
| 3 years | Mary Pittard |
| | Phyllis N Parks |
| 2 years | Amy Dexter-Guy |
| | Edward Ridge |
| 1 year | John Harrison |
| | Aulden Stewart |

Chairman-Immediate Past President Susan McMahan

Long Range Planning & BY-Laws Committee

| | |
|---------|-------------------|
| 3 years | Daniel Dexter-Guy |
| | Phyllis Parks |
| 2 years | Susan Taylor |
| | Edward Ridge |
| 1 year | Vera M. Lyman |
| | Roger K. Pabian |

Standing Committees

| | | | |
|--|--|-----------------|------------------|
| Education / Librarian | Roger Pabian | MWF Liaison: | Vera Lyman |
| Field Trips: | Pat Akins, Coordinator | Scholarship: | Vera Lyman |
| Historian: | Susy McMahan | Christmas Party | Edward Ridge |
| Membership Record: | Edward Ridge | 2005 Show: | John E. Harrison |
| Programs: | David Heffelbower | 2004 Show: | Roger Pabian |
| Property: | Pat Akins, Jr. & Jim Marburger | 2005 Swap | Roger Pittard |
| Youth Activities: | Kay Jurgens | 2004 Swap: | Pat Akins, Jr. |
| Refreshments/Door Prizes | Judy Reilly | | |
| Housing Committee: | Susy McMahan, Pat Akins, Charles Wooldridge & Vera Lyman | | |
| Auditing Committee: | John Harrison, Roger Pabian, James Marburger | | |
| Geology Day Coordinator : 2nd Vice President | | | |

L. G. M. C. web address—courtesy of Jim Atkins:

<http://incolor.inetnebr.com/jna/gemclub/lgmc.htm>

Your PICK & SHOVEL Staff

| | |
|---------------------------|--|
| Publisher: | Lincoln Gem & Mineral Club, Inc., P.O. Box 5342, Lincoln, NE 68505-0342 |
| Editor: | Judy Reilly, 421-3064 4050 Worthington, Ave., Lincoln, NE 68502, E-mail: jshannonreilly@aol.com |
| Circulation: | Phyllis N. Parks 476-6798 |
| Business Reporter: | Vera Lyman 464-6089 |
| News Reporters: | All Club Members |

The *PICK & SHOVEL* is the official publication of the Lincoln Gem & Mineral Club, Lincoln, Nebraska. Articles and items appearing within may be reproduced in other club bulletins, provided proper credit is given to the *PICK & SHOVEL* and the author and that a reprint of the bulletin is sent to the editor of the *PICK & SHOVEL*.

The purpose of this corporation shall be to study, promote an interest in, and disseminate knowledge of lapidary and various Earth Sciences including but not necessarily limited to geology, paleontology and mineralogy. It shall be a particular purpose of the corporation to provide education in these fields to its members and the general public, especially to youth and student groups.

J. J. & L. ROCKS and MINERALS

COME SEE US FOR YOUR ROUGH NEEDS!

GEMS - CABS - SLABS - MOUNTINGS
STERLING SILVER - GOLD FILLED - 14K GOLD
SILVER SUPPLIES - TOOLS - MACHINERY - NEW AND USED
CUSTOM SERVICES FOR SLABS, FLAT LAPPING, AND CABOCHONS

STARTING OUR 29th YEAR

330 LOCUST
HICKMAN, NE 68372-0068

PHONE
402-792-2337

"PROVIDING SUPPLIES FOR THE NOVICE TO THE DISCRIMINATING ROCKHOUND"
Please Call for Appointment

Presidential Field Trip July 4 weekend, 2004

**Denver Gem and Mineral Guild's claim
on the Wigwam Creek trailhead
in the Pike National Forest in Colorado**

Advertising by rock-hobby business or interest is permitted with the approval of the Board. The rate now set at \$15.00 per full page; \$7.50 per 1/2 page; \$5.00 per 1/3 page; and \$3.75 per 1/4 page(min) per issue, paid in advance. These ads will be placed through the bulletin as space permits.

Subscription to the Pick & Shovel is \$10.00 per year mailed.

Dues to Lincoln Gem & Mineral Club are as follows:

Adults (age 16 and over) \$10 per year Juniors (age 12 to 16) \$2 per year

Family Membership (Couple, resident children under age 16) \$22 per year

New memberships must be approved by the Board, after the applicant attends at least one meeting of the club and pays the above dues plus a \$5 registration fee.

Meetings: Fourth Thursday, Sept. through May except December & January dates will be announced. Meetings held at Antelope Park Indoor Shelter, near 30th and Sumner, next to the Veterans Memorial and the children's playground.